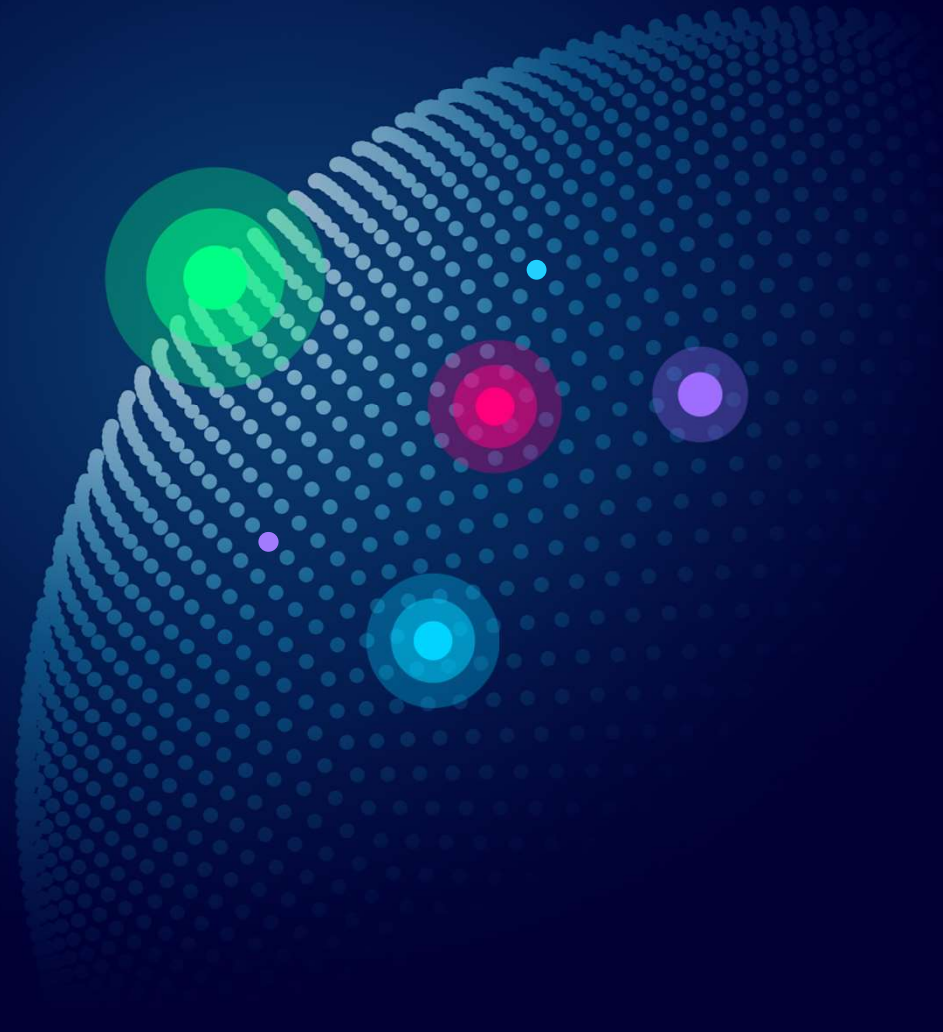




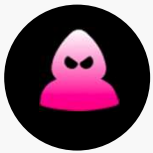
XM Cyber
A Brand of Schwarz Digits

**See The Attack
Before It Happens.**

See All Ways



Angreifer umgehen Detection – verlassen Sie sich auf Ihre Cyber Security Posture?

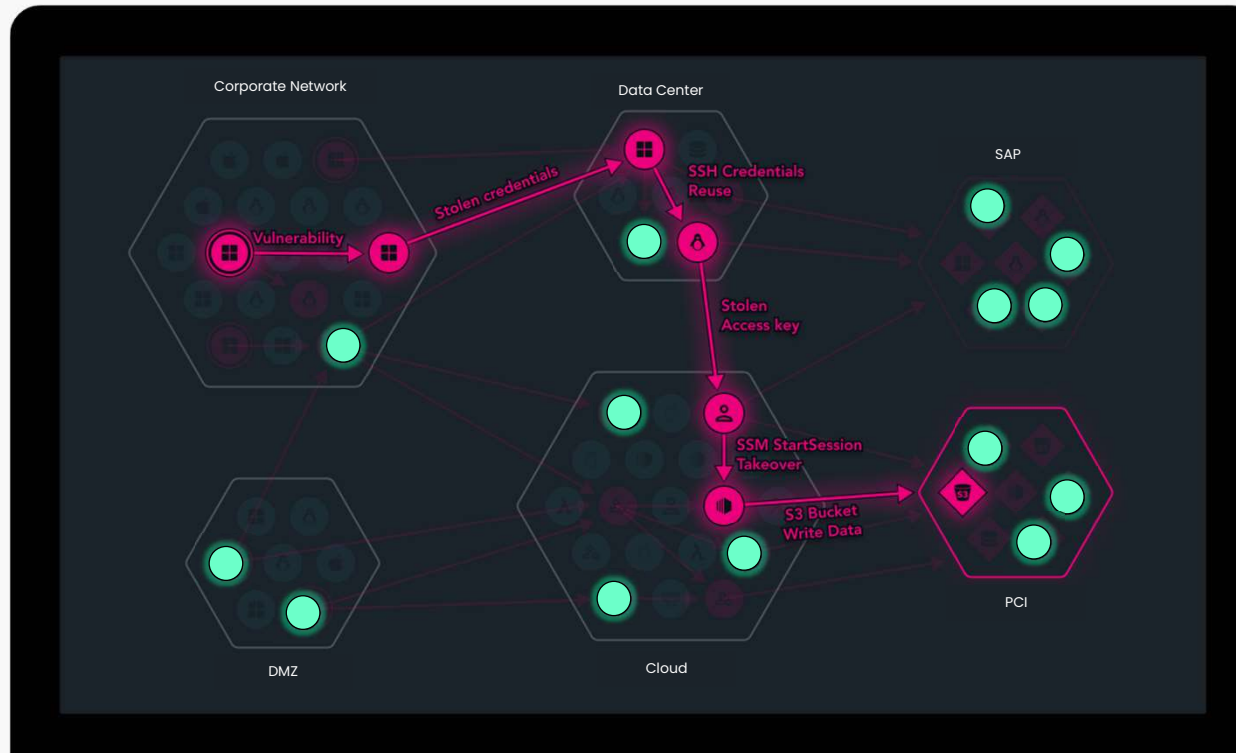



Wie priorisieren Sie Schwachstellen?

Wissen Sie 24/7, ob und **WIE** Ihre kritischen Assets angreifbar sind?

Wie oft lassen Sie Pen-Tests durchführen?

Gives advantage to attackers



 Remediation effort completed



Anhand welcher Metriken messen Sie Ihre Security Posture?

Anhand welcher Metriken verbessern Sie Ihre Security Posture und bestimmen, welche Features/ Tools einzusetzen sind?

Wie gut bewerten Sie Ihren Security Score auf einer Skala von A – F?

Busy fixing the wrong things

Major Clients Trust XM Cyber

- Founded 2016
- Acquired by Schwarz in 2021
- 403% YoY Growth
- 30 registered patents
- GDPR Compliant
- SOC2, ISO 27001, BSI C5 Certified



Key Strategic Technology Partnerships



Product Overview

XM CEM (Continuous Exposure Management)

XM Attack Graph Analysis™

XM ECM
(Exposed
Credentials
Management)

XM EASM
(External
Attack Surface
Management)

XM VRM
(Vulnerability
Risk
Management)

XM SCM
(Security
Controls
Monitoring)

XM CDR
(Cloud
Detection &
Response)

XM EMS (Exposure Management Service)



More Coverage, Smarter Prioritization, Fewer Fixes

Automated Discovery of How ALL Exposures Come Together To Put Critical Assets At Risk

Vulnerability Management



CVEs

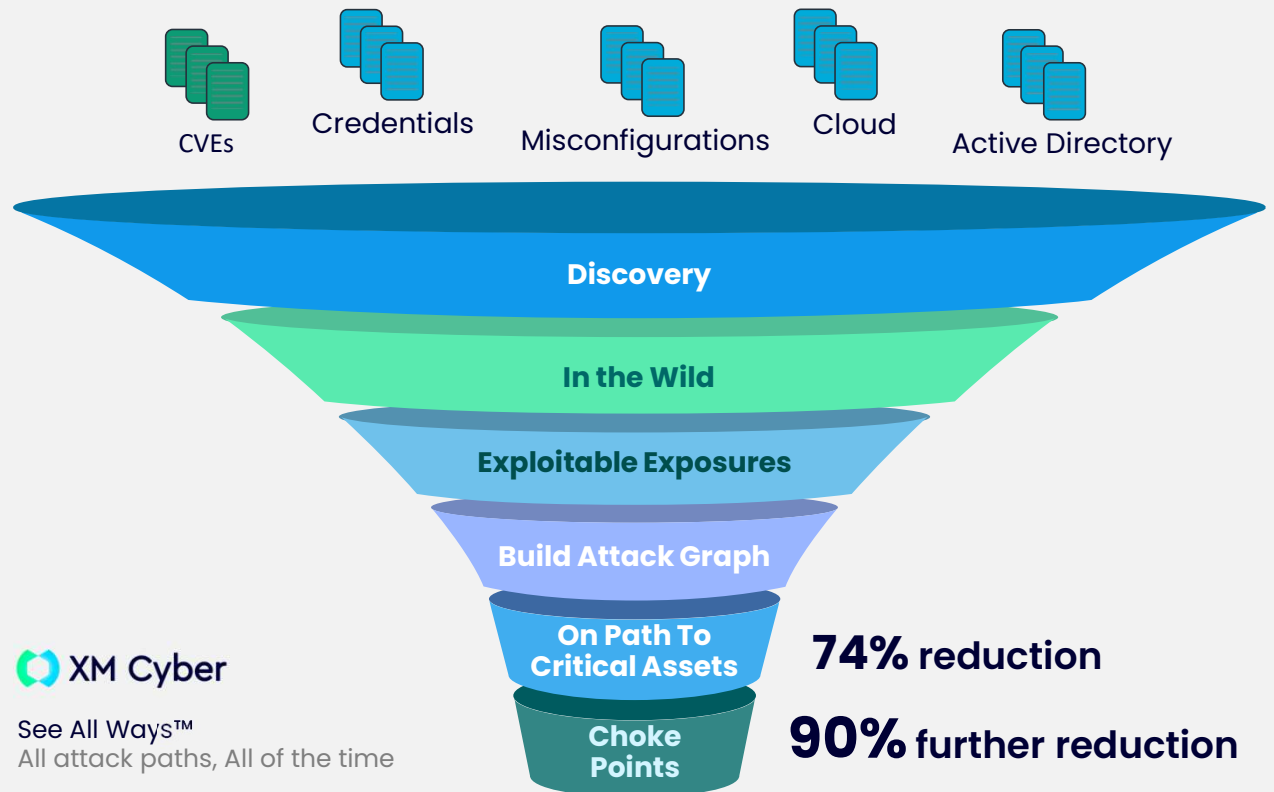


- Long lists of only CVEs
- No attack path insight

Red Team, Pen-Test & BAS tools



- Limited attack path insight
- Not comprehensive, continuous or safe



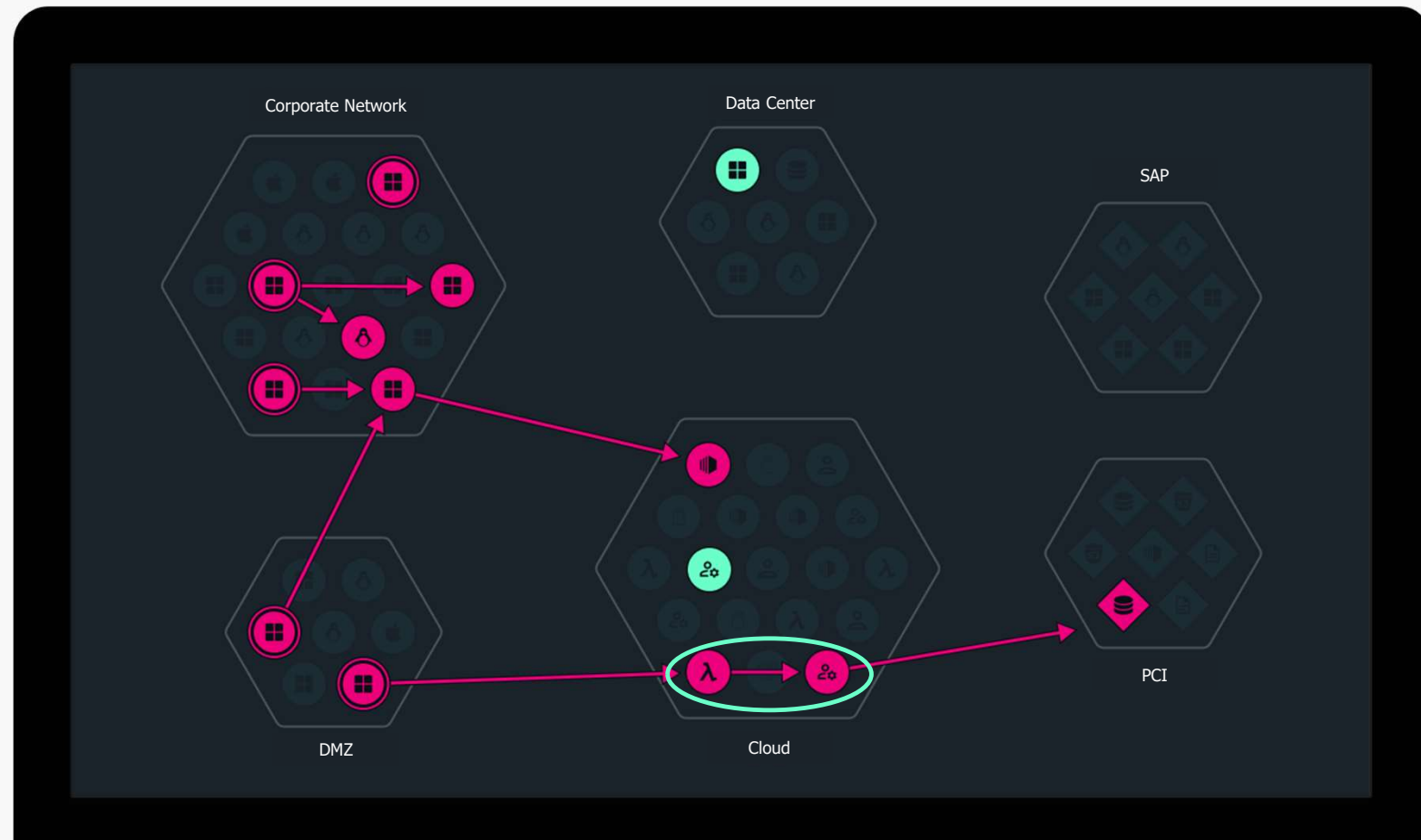
A Smarter Approach – Attack Graph Analysis™

Alle Angriffspfade zu den kritischen Assets werden angezeigt

Remedierung der Choke Points, nicht Sackgassen

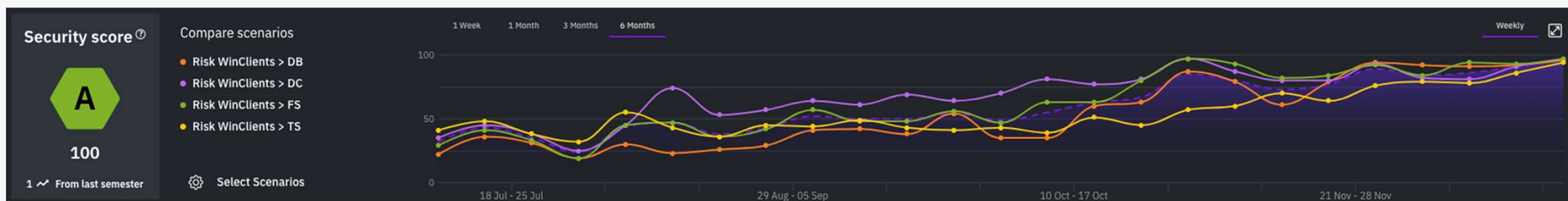
Guided Remedierungsmöglichkeiten

**Fix Less.
Prevent More.**

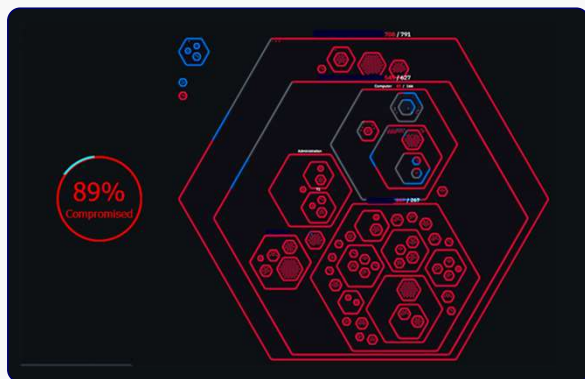


Case Study: Fast, Demonstrable Risk Reduction

30,000 employee company goes from F (34) to A (100) in 4 months



Example step in the journey: Ransomware scenario resolved in 1 day



BEFORE

- Choke point on internet-facing file server
- 2 cached privileged credentials
- EDR not running, although installed



AFTER

Thank You.



© XM Cyber 2024